

Ticketing & Accessing systems

State of the art, Wireless, Web based, Multi POS, Multi Entrance, Multilanguage, Turn-key solution, Easy to use, Industrial quality, PASS





Aquacom Company

Aquacom is an international company founded in 2000 with branches in Europe, Australia, Middle East and South Africa. We have activities on all continents. Aquacom is in a business of facility turn-key solutions, facility system integrations, facility management and joint ventures. We focus on the success of the whole development project and, which is very important, we assist a client to move from project to operations mode. In addition, Aquacom offer various partnership models to clients.

PASS® System

This is an in-house developed system for facility management, ticketing, access control, and monitoring. This system has powerful features for all operationally involved users, as well as the facility investors. We use **PASS®** when we are contracted to do a facility management.

Cable Parks

Cable Park is a facility that offer waterski, wakeboard and water fun activities by means of using a cableway. Aquacom was the first system integrator company on the international Cable Park market. We have investment shares in many of Cable Parks worldwide.

Aqua Parks (Water Parks)

Since 2008 Aquacom has added to its offering Aqua Park solutions.

Aquacom in Sport

Aquacom believes that there is a big synergy between sport and facility business, and that is why we are involved in sport and invest in its development.

Joint Ventures

If an investor likes to share the business challenges and risks with us, a standard Joint Venture model offers 15% investment by Aquacom. Furthermore, AquaCom responsibility would be to implement a Turn-Key facility solution.

Consulting Services

Our Consulting Services would save money and time in the project. AquaCom experienced team would assist with all the project technical and business challenges, as well as operation of the business.



PASS® System

- **Web based**
- **Multi POS**
- **Multi Entrance**
- **Multilanguage**
- **Wireless**
- **Turn-key solution**
- **Easy to use**
- **Industrial quality**
- **State of the art design**
- **The latest technologies**
- **SunCell usage**



What is a Ticketing & Accessing system?

Tickets

When a customer enters a park and pays at the entrance gate, there is no need for a ticket to be issued. But, if a ticket purchasing moment and a moment of ticket checking (access control) are separated, a **ticket needs to be issued**.

Ticket examples are:

- **Bus ticket**
- **Soccer game ticket**
- **Cinema ticket**
- **Visa to enter a country.**
- **Sport Club membership card**
- **Ticket to rent an equipment**
- **Rent a car voucher**
- **Etc...**

A ticket **gives holder a right** to enter an event, enter a facility, or consume certain services. Ticket has its price, description, duration, restrictions, form and other details. A **ticket holder** details could be recorded on the ticket (personalized ticket) or the ticket could be impersonalized.

Different forms of issued tickets are:



- **Printer Paper ticket with text**
- **Preprinted paper ticket with barcode**
- **RFID card**
- **Plastic or metal token**
- **Secret code**
- **e-Ticket on a mobile phone**

- **Password on a computer**
- **A fingerprint record in a database**



Ticketing system part

This system part is used to **sell and issue tickets to customers**. It records information about facilities, events, services that a business offers, records transactions of issued tickets and holds information about customers, if required. Furthermore, it provides financial and management reports.

Accessing system part

This system part uses one or more **Access Point Stations** to **check validity of a ticket** and allow, or disallow, a holder of the ticket to use a facility, enter an event or consume a service. A special module of this system is **facility monitoring** to make sure that there are no irregularity.

Lockers

An integral part of the **Ticketing and Accessing** system are automatically controlled **Lockers**. The latest systems bring solutions that have one reading point that controls opening of many lockers, even up to 100.

Cashless Payment

A system for Cashless Payments is often used in the facility management along the line of the Ticketing and Accessing system. This systems allows customers to use **e-Money** via access bracelets instead of caring cash or credit cards, which is very inconvenient in swimming pools.

Time Attendance

A system that is often found to be installed with the Ticketing and Accessing system is the **Time Attendance**, as all hardware are components are already present.

SunCell Camera



Ticket Booker

Investor

Internet

Internet

Rental Station



Access Point
Station



Operators
Station



AQUACOM



Cable Park Kish Island

PASS® system is installed at this facility for ski ticketing, equipment rental and control of ski facility access and usage. The system uses waterproof bracelet tickets with pre-printed bar code.

PASS® offers a facility manager a tool to control ticket sales and usage of the facility. Furthermore, a collected customer database could be used for facility advertisements campaigns.

PASS® on internet enables a registered Sale Broker to book ski tickets and input a customer information in the database.

Using **PASS**® on internet an investor can analyze ticket sales and visually check the facility.

POS Station

At the POS Station a cashier issues a ticket puts it over customer wrist. to a customer here. Optionally, customer photo and finger-print are recorded.

Dress Boxes

At the Dress Room the customer changes to a wet suit and can use a Dress Box to store the clothes.

Rental Station

if the customer rented any equipment, it is given to the customer at the Rental Station.

Access Point Station

Ticket validity is checked at the Access Point Station on the platform. When customer checks a ticket the first time, the ticket is activated and round counting or time contingent is starting.

Operator Station

The operator can see the customer photo on the monitor, as well as the ticket remaining rounds or time contingent.



PASS® Software

Reach Structure

At the top of the organisational hierarchy of the system is a business entity that can have many facilities. Each facility can have many segments or events. This reach structure makes **PASS®** applicable to a wide range of requirements, starting with a single POS and Pass station to a global multi facility business with buildings on different continents.

System Entities

PASS® is a Ticketing and Accessing system. Some of the main entities in the systems are:

- Tickets
- Customers
- Business
- Facilities, Segments, Events
- Point Of Sale (POS) Stations
- Accessing (Pass) Stations
- User Roles
- User Rights
- Audit Logs
- Cameras

Extendable

The **PASS®** can easily grow with someone's business by adding a new facilities, segments, POS stations, Pass Stations, etc...

Web Based

This is a modern fully web-based system, which takes advantages of the latest technologies.

Multilanguage

The **PASS®** supports a language localisation, and it is available in many of the most spoken languages.

Look & Feel customisation

The system supports and easy to change look and feel by selecting different themes.

Environment

- The **PASS® client** supports any platform that runs an internet browser.
- The **PASS® server** prefers Microsoft Windows server
- The **PASS® database** prefers Microsoft SQL server

Tickets

The system supports the following ticket types:

- Barcode
- RFID
- Chip card
- Magnet strip card
- Fingerprint
- Eye-print
- Secret code

The tickets could be personalised or not.

POS Station

It is a computer station used for selling and issuing tickets to customers. It has the following special features:

- graphical displays of segment sits on the screen with color indication of sold and available seats, which allows cashier to select available seat during the sale transaction. By adding a second screen visible to customers, so they can see the available seats and guide the cashier.
- Automatic seat search that automatically finds seats that are next to each, if customer wants to buy 2 or more tickets.

Access Point Station

It contains a **PASS®** Controller, which controls entry doors, ticket readers and other accessing devices. It **checks validity of a ticket** and allows, or disallows, a holder of the ticket to use a facility, enter an event or consume a service.

Management (admin) Station

The **PASS®** supports various financial and management tools and reports to assists in the facility control, capacity monitoring, financial optimizations and growth of the business.

Special Stations

- Info desk
- Rental station
- Operator/Controller station

User Rights

The system supports definition of different roles and access rights so different users (like cashier, info desk, facility manager) can only access parts of the system which are enabled to them.

PASS® Controllers

PASS® Controller

The *PASS*® is a microcontroller unit that controls entry doors, ticket readers and other accessing devices. This controller connects to *PASS*® server and other system components via LAN or WAN. The *PASS*® controller can also function as a stand-alone access point.

Cable or Wireless connection

The *PASS*® supports network cable communication, as well as a fully wireless communication between all system components.

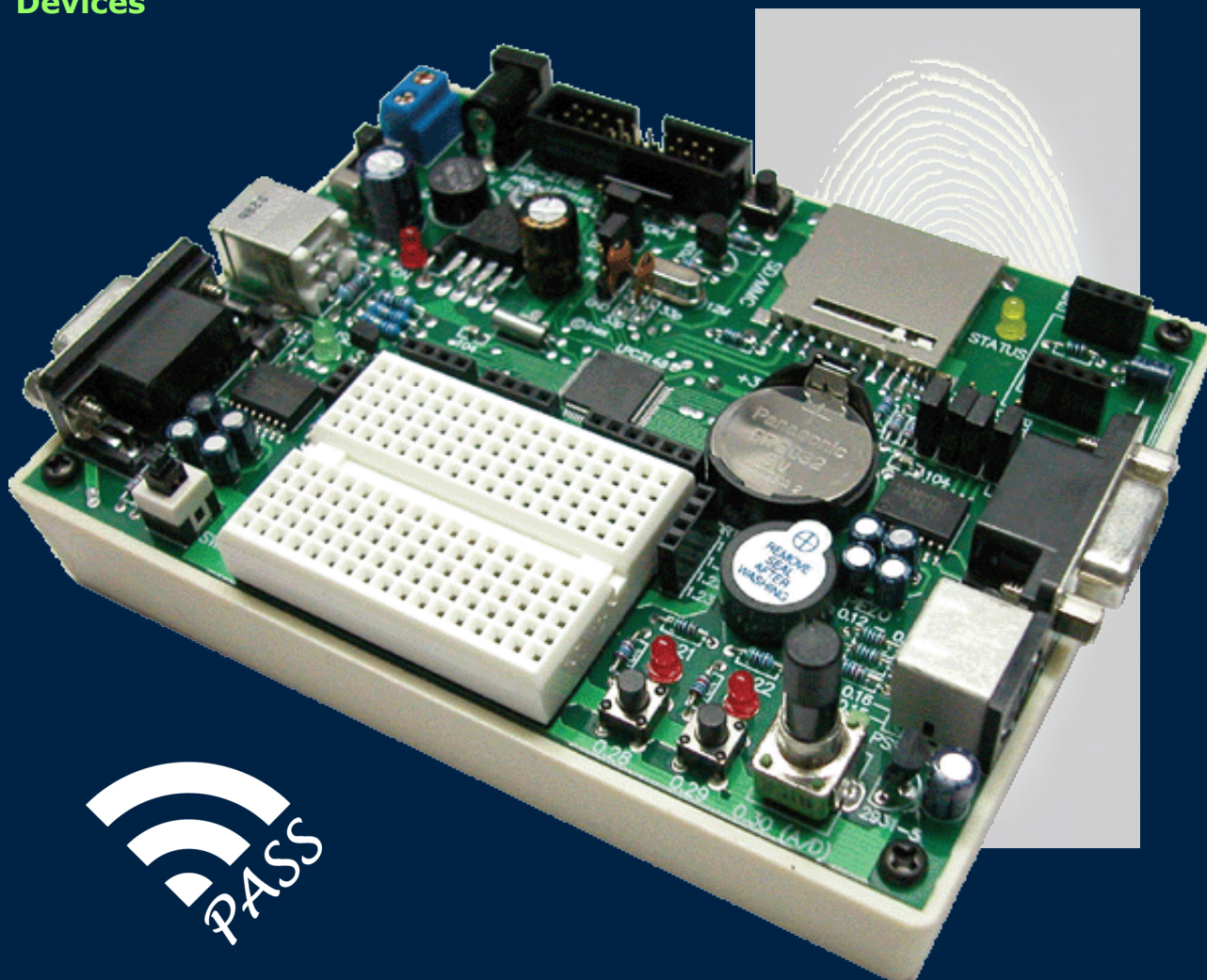
Quality components

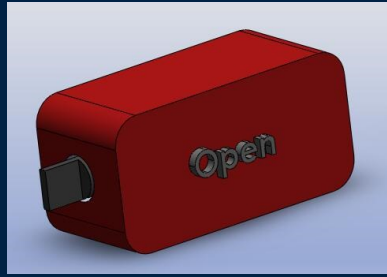
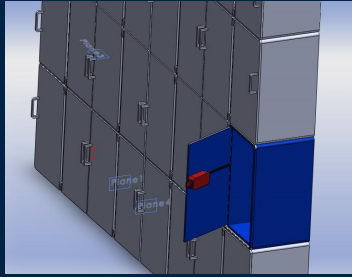
We use quality components from market proven manufacturers for our writers and readers.

On the *PASS*® Controller can be connected the following devices:

- Various types of doors
- Ticker readers for:
 - Barcode
 - RFID
 - Chip card
 - Magnet strip card
 - Fingerprint
 - Eye-print
- Signalisation
- Secret Code keyboard
- USB flash
- Display
- Camera

Devices





Smart wireless Access Points



If powered by **batteries**, the **PASS®** door becomes a fully **cordless device**.

Various applications:

- Stadiums and Arenas
- Entertainment venues
- Cable Ski Parks
- Musical Events
- Fairs-exhibition centers
- Tourist resorts
- Theme parks
- Museums and Zoos
- Convention Centers
- Swimming pools
- Member's Country Clubs
- Water Parks
- Fitness Clubs
- Amusement Parks
- Car Parking
- Public Transportation
- Fare collection systems

PASS® supports:

- Barcode ticket
- RFID ticket
- Chip Card
- Fingerprint
- Eye-print
- Unique Code
- Magnet Card



E-mail: info@AquaCom.net
Web: www.AquaCom.net

