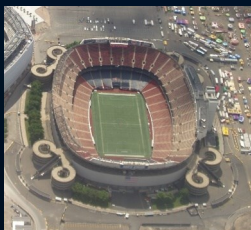
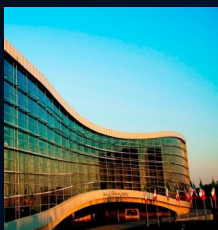


# PASS® Payment Card





### Aquacom Company

Aquacom is an international company founded in 2000 with branches in Europe, Australia, Middle East and South Africa. We have activities on all continents.

### PASS® System

Aquacom and its partners has developed **PASS®** System for Smart Payment Cards, Cashless Payments, Facility management, Ticketing, Facility Access Control and Facility Monitoring. **PASS®** system has powerful features and uses the latest technologies. for all operationally involved users, as well as the facility investors. Aqua Park solutions.

### Other Aquacom business

In addition to the business **PASS®** System business, Aquacom is in a business of facility turn-key solutions, facility system integrations, facility management and events organization. We focus on the success of the whole development project

and, which is very important, we assist a client to move from project to operations mode. In addition, Aquacom offer various partnership models to clients. Some of the facility types are as follows:

**Cable Parks:** is a facility that offer waterski, wakeboard and water fun activities by means of using a cableway. Aquacom was the first system integrator company on the international Cable Park market.

**Water (Aqua) Parks:** Since 2008 Aquacom has added to its offering

### Aquacom in Sport

Aquacom believes that there is a big synergy between sport and facility business, and that is why we are involved in sport and invest in its development.



### Various applications:

- Stadiums and Arenas
- Entertainment venues
- Cable Ski Parks
- Musical Events
- Fairs-exhibition centers
- Tourist resorts
- Theme parks
- Museums and Zoos
- Convention Centers
- Swimming pools
- Water Parks
- Fitness Clubs
- Amusement Parks
- Car Parking
- Public Transportation



### PASS® System

- **Web based**
- **Multi Partners**
- **Multi Facilities**
- **Multi Segments**
- **Multi Terminals**
- **Multilanguage**
- **Wireless connection**
- **Turn-key solution**
- **Easy to use**
- **Industrial quality**
- **State of the art design**



# What is a *PASS*® Card concept?

## *PASS*® Infrastructure

It is a network of *PASS*® Terminals installed in various facilities and connected to a *PASS*® Servers via Internet.

## *PASS*® Facilities

These are facilities that offer a special price and other benefits to a *PASS*® Card holder.

Facilities examples are:

- **Swimming pools**
- **Entertainment centers**
- **Cinemas**
- **Sport Clubs**
- **Restaurants**
- **Gyms**
- **Hotels**
- **Stadiums**
- **Etc...**



Each facility has one or more *PASS*® Terminals installed, as well as a contract for being a certified *PASS*® Facility.

## *PASS*® Partners

These are companies that has a contract to use the *PASS*® Infrastructure. The *PASS*® Partners buys *PASS*® Cards and issue cards to holders. The card holders can be:

- **Company employees**
- **Club members**
- **Event participants**
- **Social groups**
- **Loyal customers**
- **Etc...**

Once per month, the *PASS*® Partner collects money from its *PASS*® Card holders and pays to the *PASS*® facilities. A part of the price benefit for use of facilities goes to the *PASS*® Partner budget.

The first *PASS*® partner in Iran was **Saipa** company, which issued over 15,000 *PASS*® cards to its employees.

## *PASS*® Card holders

These are persons that gets a *PASS*® Card from a *PASS*® Partners. The persons gets a special price for use of any *PASS*® facilities. Once par months the *PASS*® Card holder pays to the *PASS*® Partner for usage of the facilities. The amount to be paid can be deducted from the persons salary.



## *PASS*® Cards

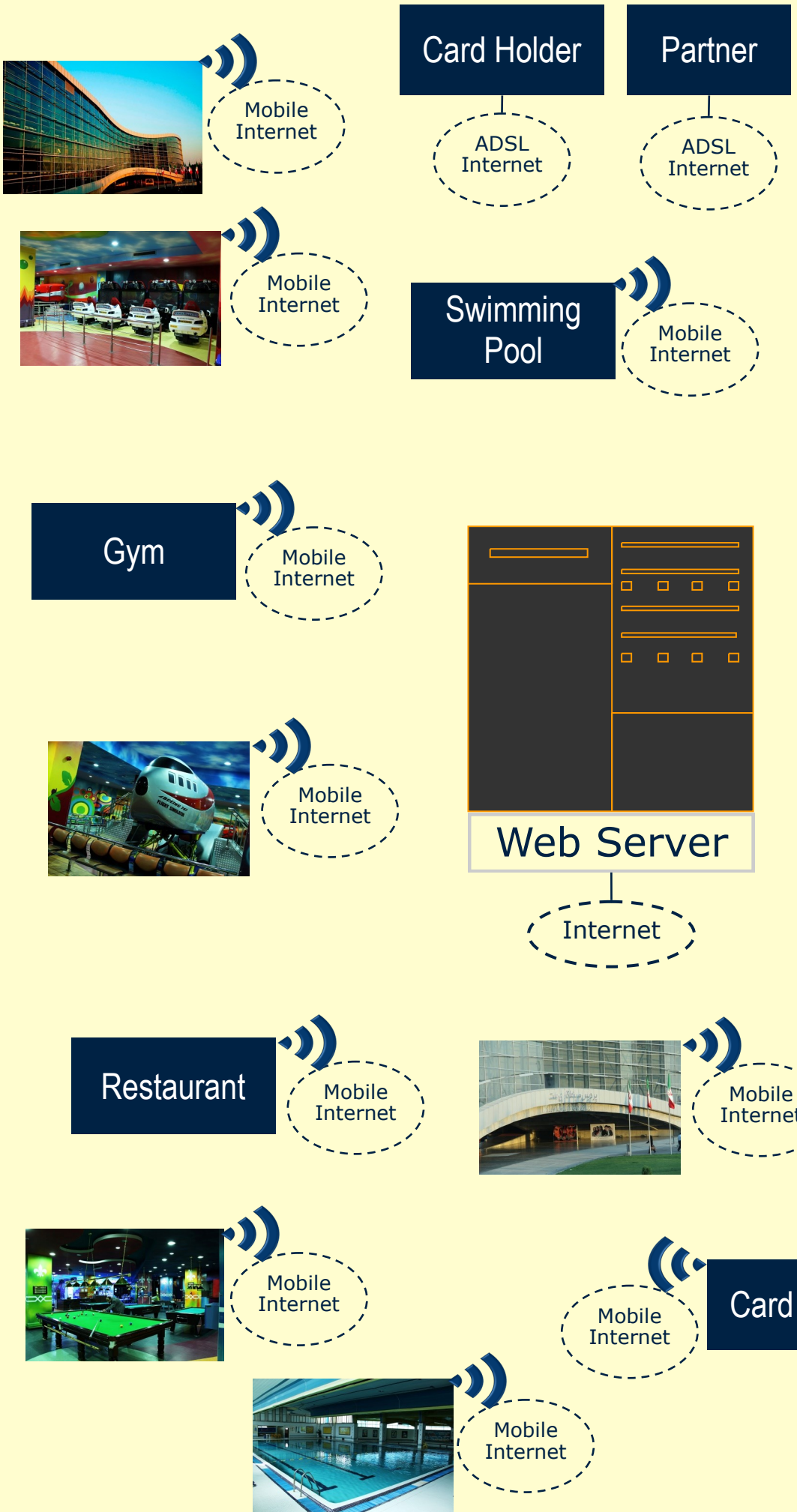
These are Smart Cards with electronic chip and an advanced technology for contactless communication with a *PASS*® Terminal. All the information on the card is stored with a highest level of encryption. A card has an usage limit; when a limit is reached a card has to be recharged.



PASS® Facilities in Tehran:

- Facility name
- Facility name
- Facility name
- Facility name
- Facility name
- Facility name
- Facility name
- Facility name
- Facility name
- Facility name
- Facility name
- Facility name
- Facility name
- Facility name
- Facility name
- Etc...

PASS® Infras



# structure



## PASS® Card concept

### PASS® Infrastructure

It is a network of *PASS®* Terminals installed in various facilities and connected to a *PASS®* Servers via Internet

### PASS® Facilities

These are facilities that offer a special price and other benefits to a *PASS®* Card holder.

### PASS® Partners

These are companies that has a contract to use the *PASS®* Infrastructure. The *PASS®* Partners buys *PASS®* Cards and issue cards to holders.

### PASS® Card holders

These are persons that gets a *PASS®* Card from a *PASS®* Partners. The person gets a special price for use of any *PASS®* facilities. Once par months the *PASS®* Card holder pays to the *PASS®* Partner for usage of the facilities. The amount to be paid can be deducted from the persons salary.

### PASS® Cards

These are Smart Cards with electronic chip and an advanced technology for contactless communication with a *PASS®* Terminal. All the information on the card is stored with a highest level of encryption. A card has an usage limit; when a limit is reached a card has to be recharged.

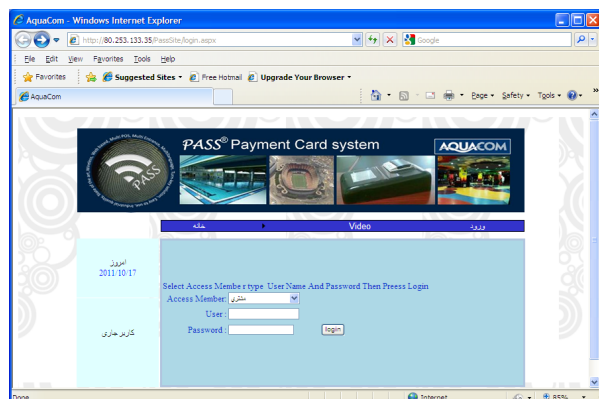


[www.pcard.ir](http://www.pcard.ir)



# PASS® System

A core of the *PASS*® Infrastructure is a *PASS*® System. Reach features makes *PASS*® System applicable to a wide range of requirements.



## System Entities

Some of the main entities are:

- Cards/Tickets
- Businesses/Partners
- Customers
- Facilities & Segments
- Terminals
- POS stations
- Events
- User Roles & Rights

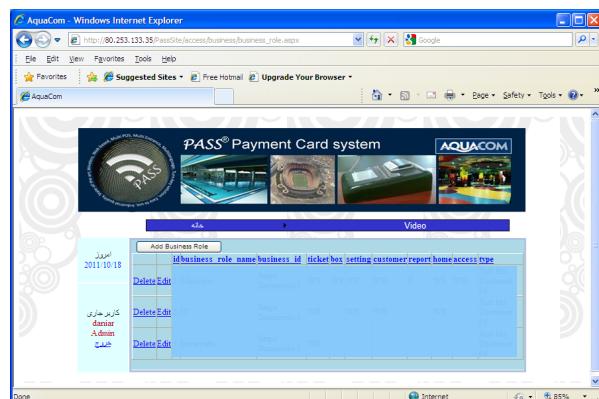
## Extendable

The *PASS*® System can easily grow by adding a new facilities, businesses, segments, POS stations, etc...

## Internet based

This is a modern fully internet based system, which takes advantages of the latest technologies.

## Multilanguage



The *PASS*® supports a language localisation, and it is available in many of the most spoken lan-

guages.

## Look & Feel customisation

The system supports and easy to change look and feel by selecting different themes.

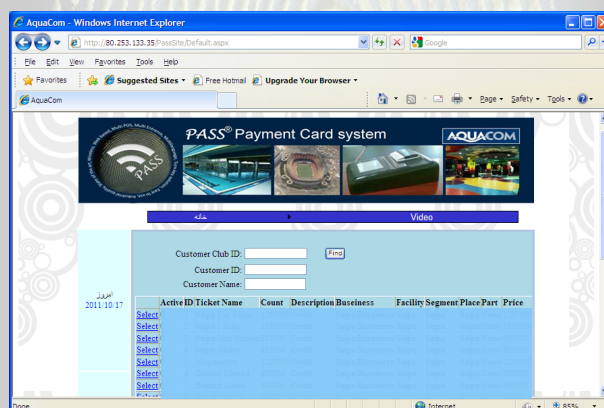
## Cards/Tickets

The system supports the following card types:

- RFID
- Chip card
- Barcode
- Magnet strip card
- Fingerprint
- Eye-print
- Secret code
- Etc...

The tickets could be personalised or not.

## Back Office



The *PASS*® System supports various financial and management tools and reports in the Back Office. These system features assist in the facility usage control, financial management, capacity management, transaction control, growth of the business and much more.

## Web Site

On the *PASS*® Card web site Card Holders, Facility Managers and Business (Partner) managers can find all transactions information relevant to them. This is achieved by definition of different roles and access rights, so different users (like card holder, partner, facility manager, etc..) can only access parts of the system which are enabled to them.

# PASS® Terminal

## PASS® Terminal

The PASS® Terminal is a device for cards reading and writing, as well as a communication with an internet server.

## Components

The following are PASS® Terminal components:

- Microcontroller
- Touch Screen
- RFID Reader/Writer
- Receipt Printer
- GPRS modem
- Ethernet connection
- USB connection
- Power supply charger

## Wireless connection

The PASS® Terminal supports mobile network communication, in addition to a fix line internet connection.

## Security

It supports the highest level of decryption for information stored on the PASS® Card.

## Microcontroller

Microcontroller unit has an ARM9 processor on 400Mh.

## Screen

PASS® Terminal has a 3.5" Touch Screen







## Smart concept

- *PASS*® Infrastructure
- *PASS*® Facilities
- *PASS*® Partners
- *PASS*® Card Holders
- Advanced Technology

**AQUACOM**

E-mail: [info@pass-sys.com](mailto:info@pass-sys.com)  
Web: [www.pcard.ir](http://www.pcard.ir)

